

### Safety Precautions

Before you use this product, we recommend that you thoroughly read this manual as well as the instruction manuals of your PC and the instrument.

Formal designations of application software used in this manual  
(Designation in this manual) (Formal designation)

Windows, Windows 7	Microsoft® Windows® 7 Professional Operating System
Windows, Windows 8.1	Microsoft® Windows® 8.1 Pro Operating System
Windows, Windows 10	Microsoft® Windows® 10 Pro Operating System

### Trademarks

- “Microsoft”, “Windows”, “Windows 7”, “Windows 8.1” and “Windows 10” are registered trademarks of Microsoft Corporation in the U.S.A. and other countries.

### System Requirements

OS Windows 7, Windows 8.1 or Windows 10: 32-bit or 64-bit versions

### Notes on Installation

- The CR-A105 driver software is designed to be used with the Windows 7, Windows 8.1 or Windows 10 operating system. Note that neither operating system is included with this software.
- One of these operating systems must be installed on the PC before this software can be installed.
- When inserting the CD-ROM into the CD-ROM drive, note the correct orientation of the disc. Insert it gently.
- Keep the CD-ROM clean and free from scratches. If the recorded surface becomes dirty or the label surface is scratched, a read error may result.
- Avoid exposing the CD-ROM to rapid temperature changes and condensation.
- Avoid leaving it in locations where it may be exposed to high temperatures from direct sunlight or heaters.
- Do not drop the CD-ROM or subject it to strong impact.
- Keep the CD-ROM away from water, alcohol, paint thinners, and other such substances.
- Remove the CD-ROM from the CD-ROM drive while the computer is turned on.

### Notes on Storage

- After using the CD-ROM, return it to its case and store in a safe place.
- Avoid leaving the CD-ROM in locations where it may be exposed to high temperatures from direct sunlight or heaters.
- The CD-ROM should not be kept in areas of high humidity.

### Disposal Method

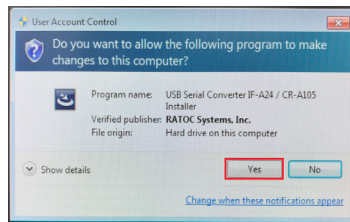
- Make sure that this product (CD-ROM and protection key) is either disposed of or recycled correctly in accordance with local laws and regulations.

### How to install

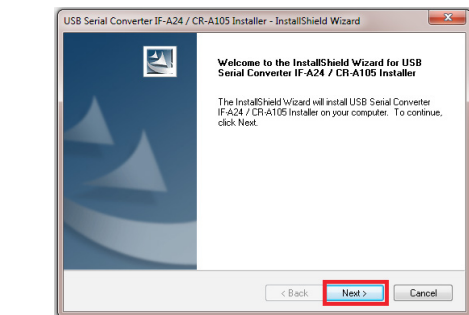
※ Please install the device driver before connecting the USB serial converter cable CR-A105.

### ● Install the device driver for USB-Serial Converter Cable CR-A105

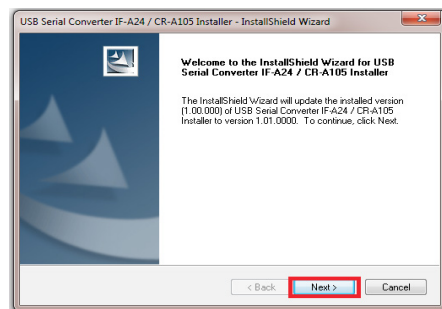
- Double-click on the file IF-A24\_CR-A105\_Setup.exe on the included CD-ROM to start the installation program. When the User Account Control screen appears, click [Yes].



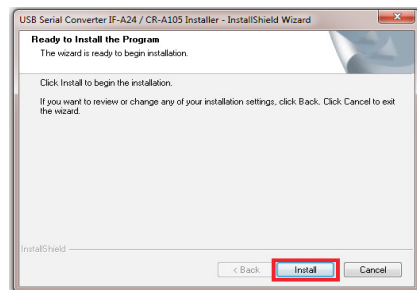
- On the installer startup screen, click [Next].  
● If you see a screen like <A>, click “Yes” and proceed to step 4.



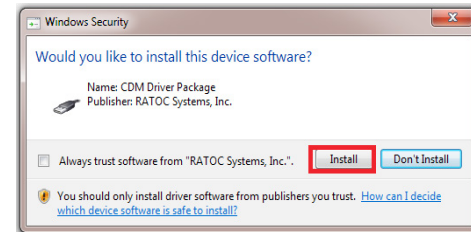
<A>



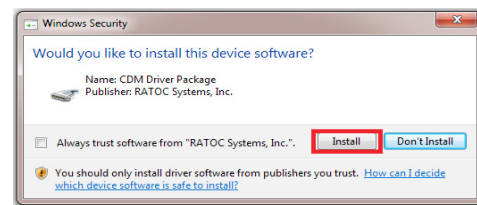
- On the [Ready to Install the Program] screen, click [Install].



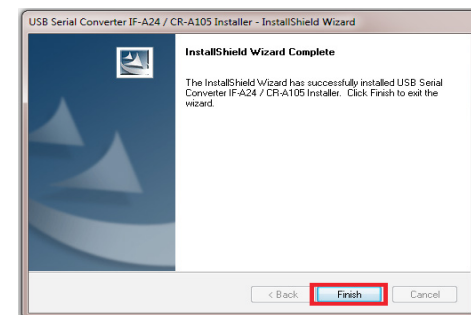
- When [Would you like to install this device software?] appears, click [Install]. The USB-Serial Converter driver will be installed.  
\* If this message does not appear, please proceed to step 5.



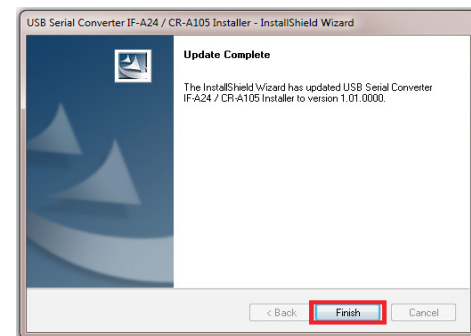
- [Would you like to install this device software?] will appear a second time, with the icon changed from a USB plug to a serial plug. Click [Install] again to install the USB-Serial Port.  
\* If this message does not appear, please proceed to step 6.



- Installation has been completed. Click [Finish].  
● If screen <A> appears in step 2, installation will end with screen <B>.



<B>



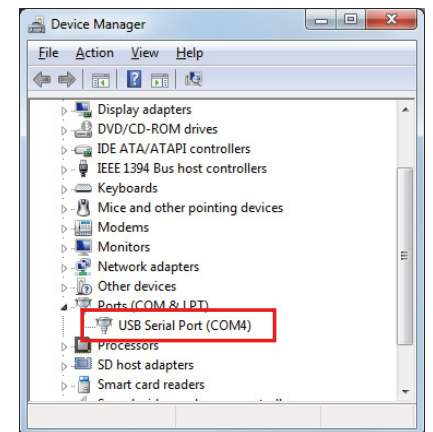
### ● Connect the USB-Serial Converter Cable CR-A105 to the PC

- After the device driver installation has been completed, connect the CR-A105 to the PC and instrument.

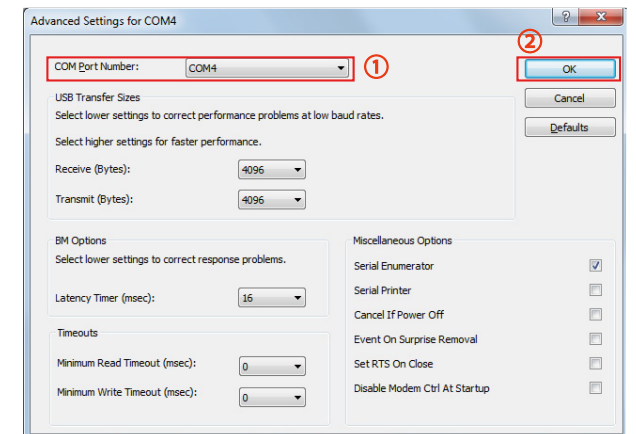
### Check the Installation

To verify that installation of the drivers has been completed properly, open the Device Manager in the Control Panel.

- If the virtual COM port driver [USB Serial Port (COMx)] has been added to the list of COM ports in [Ports (COM & LPT)], driver installation was completed properly.



- To change the COM port number, double-click on [USB Serial Port (COMx)]. The [Properties] dialog will open. Select the [Port Settings] tab and click the [Advanced] button. In the [Advanced Settings for COMx] dialog, select the desired COM Port Number, click [OK] to close the [Advanced Settings for COMx] dialog, and then click [OK] to close the [Properties] dialog.



- The latest instruction manual for your instrument can be downloaded from the Konica Minolta website at the following URL:  
[https://www.konicaminolta.com/instruments/download/instruction\\_manual/color/index.html](https://www.konicaminolta.com/instruments/download/instruction_manual/color/index.html)

(The above URL is subject to change without notice.)